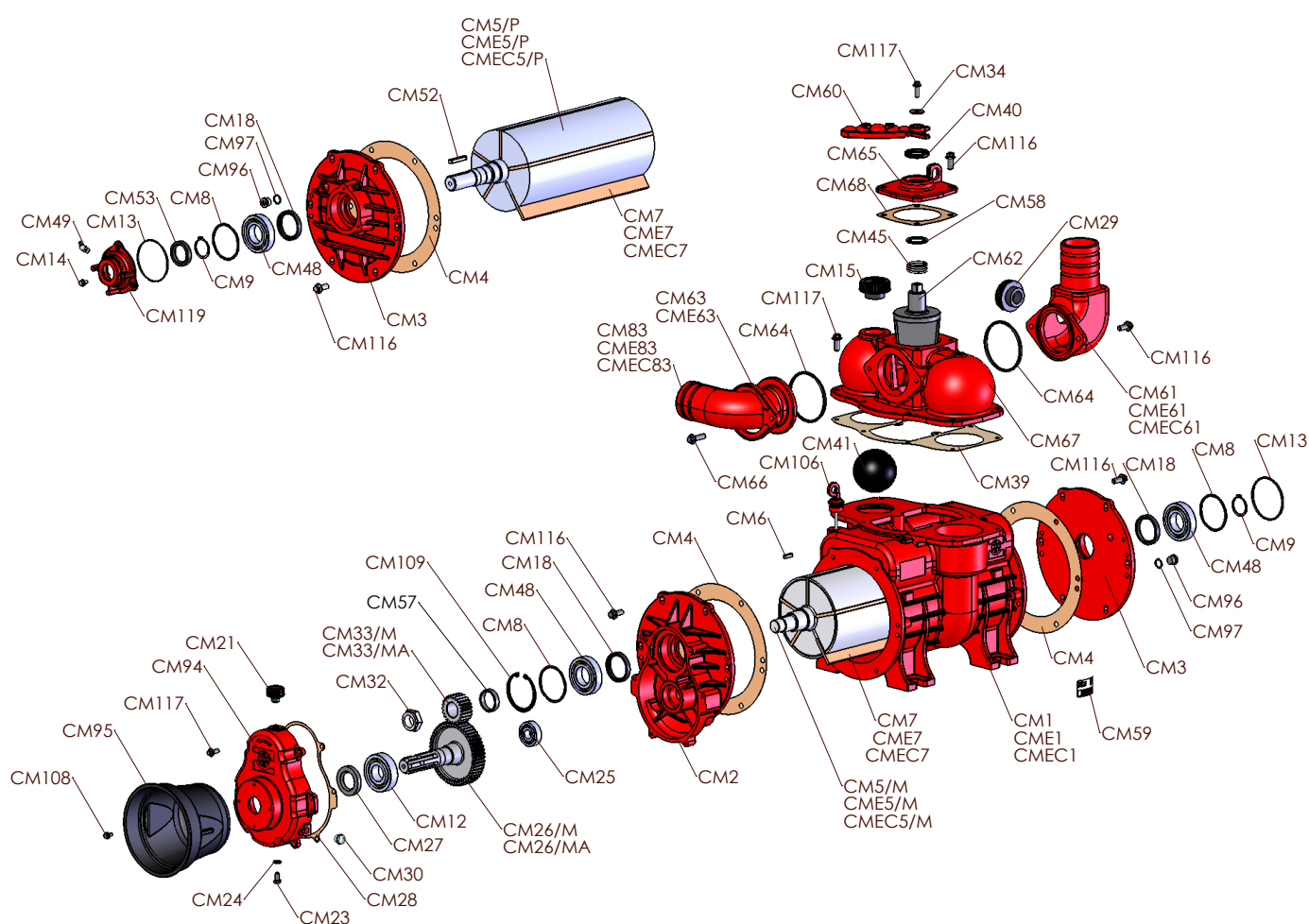
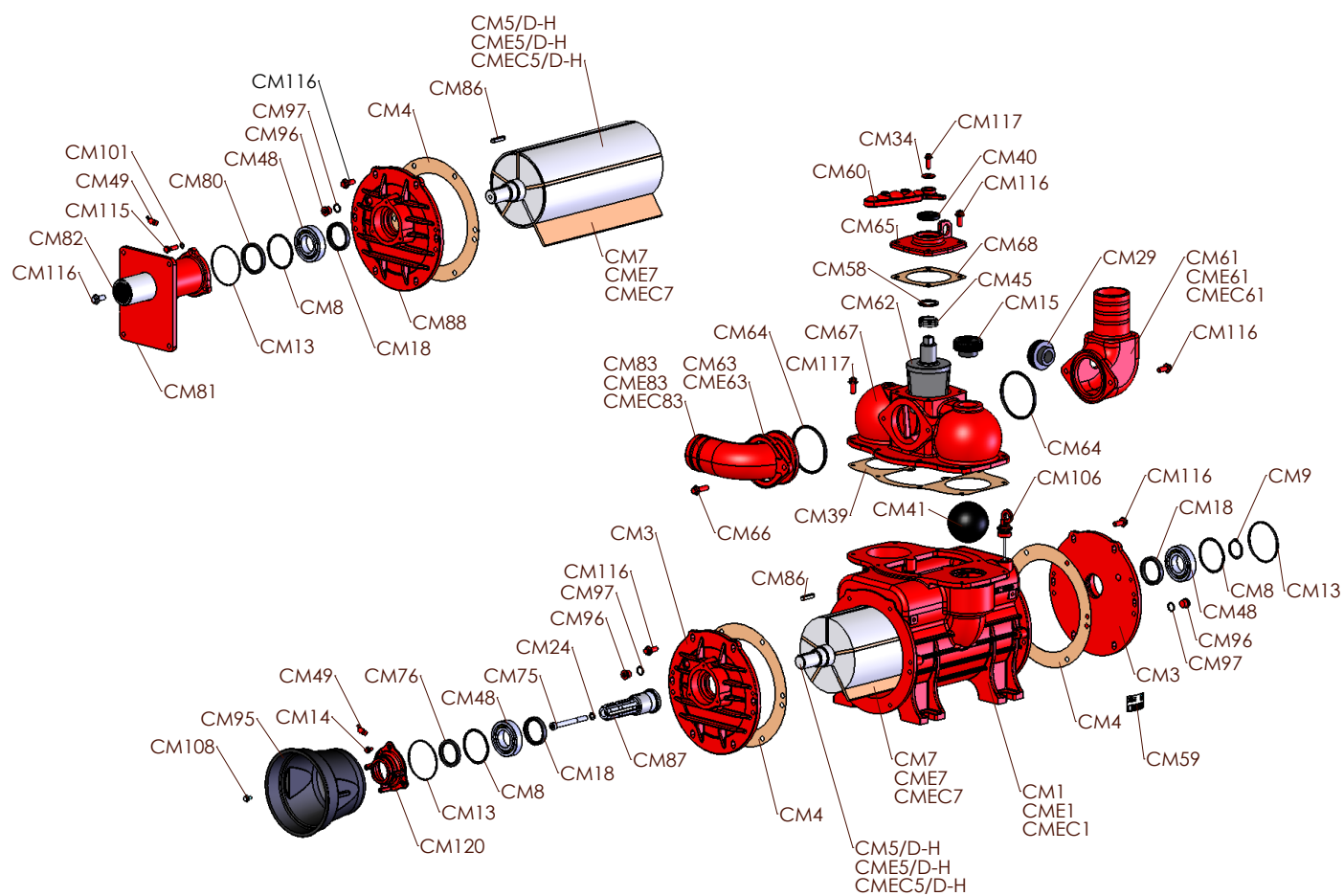


# MEC 9000-11000-13500/M-P



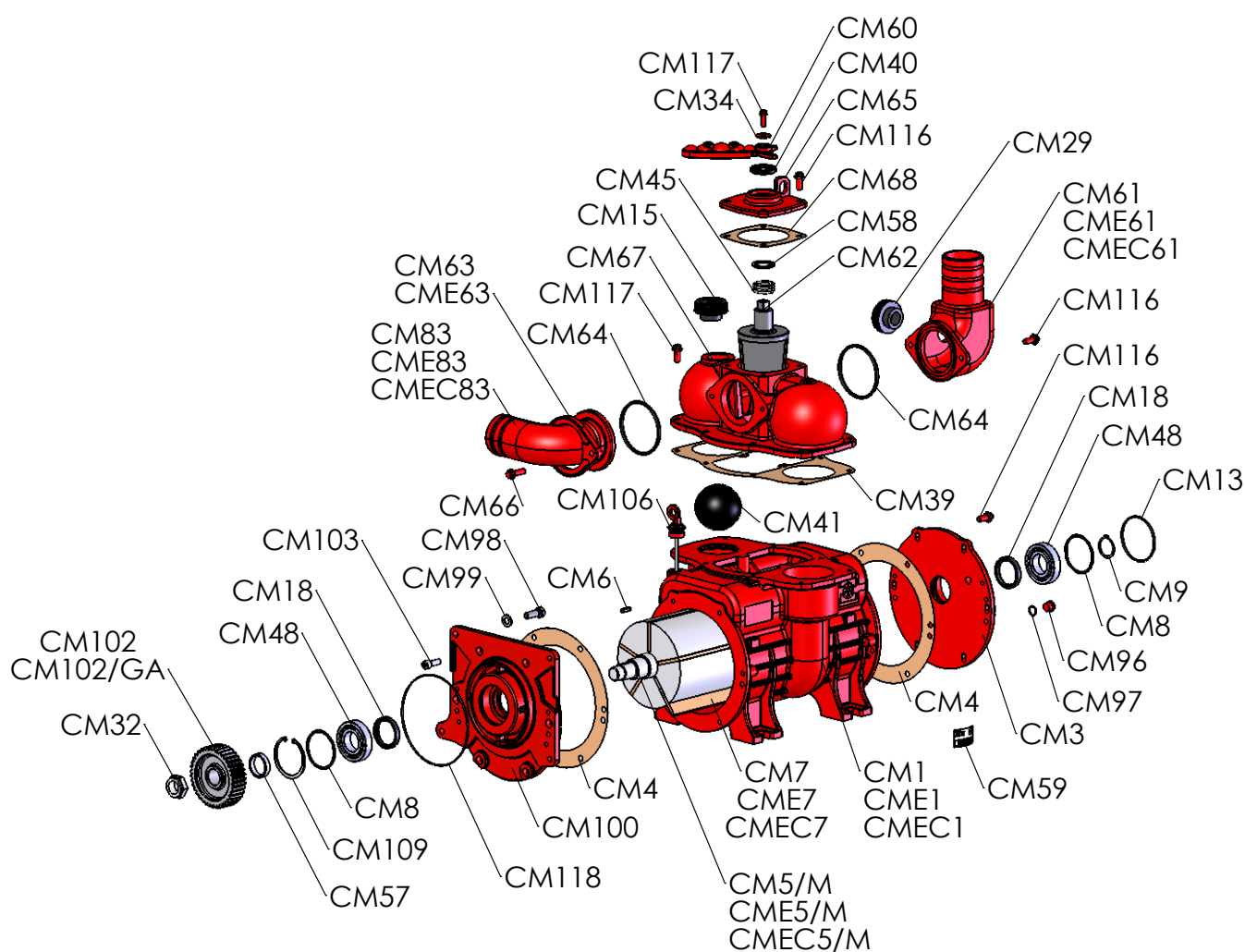


## MEC 9000-11000-13500/D-H





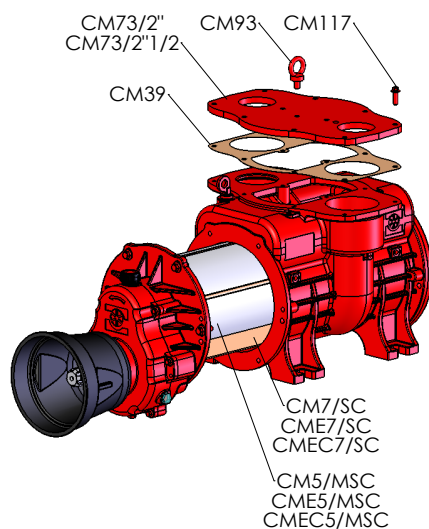
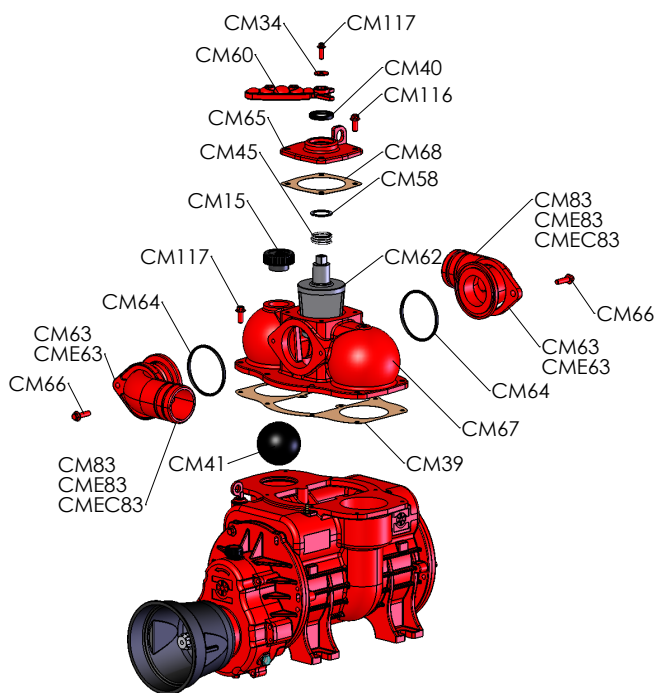
**MEC 9000-11000-13500/G**



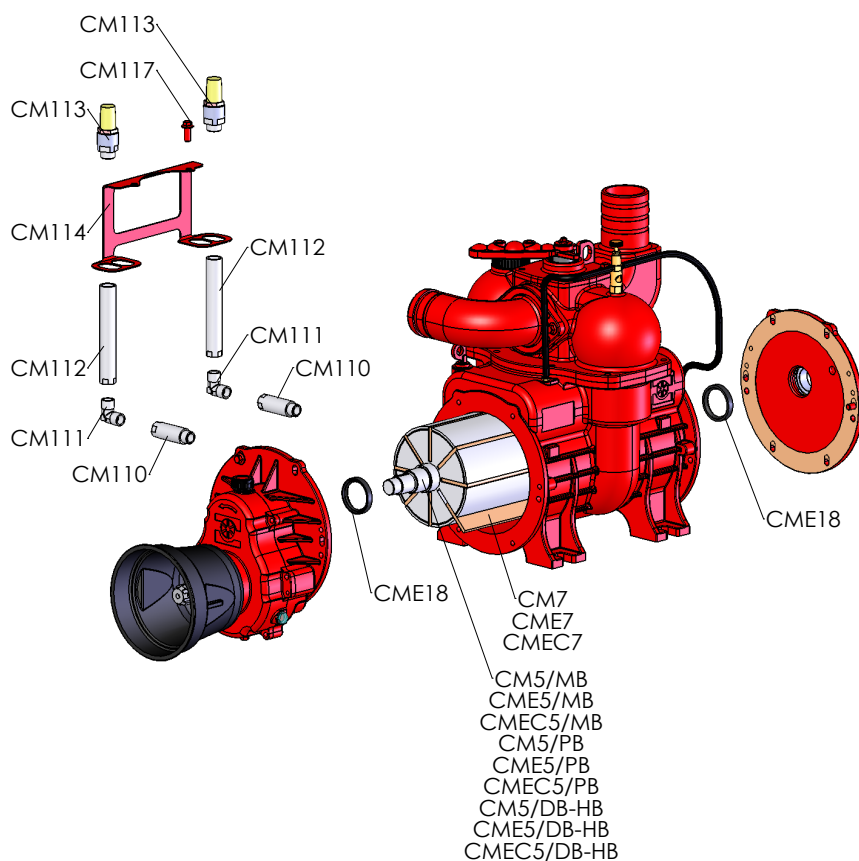


**MEC 9000-11000-13500 U.L.**

**MEC 9000-11000-13500/M S.C.**



**MEC 9000-11000-13500 BALLAST**





## MEC 9000 – 11000 – 13500

<i>Articolo</i> (Article)	<i>Codice</i> (Code)	<i>Descrizione</i> (Description)	<i>Q.tà</i>
CM 1	4010101085	Corpo pompa Pump body	MEC 9000 1
CME 1	4010101086	Corpo pompa Pump body	MEC 11000 1
CMEC	4010101087	Corpo pompa Pump body	MEC 13500 1
CM 2	4010301028	Scatola moltiplicatore Gearbox	MEC / M 1
CM 3	4010401061	Flangia anteriore e posteriore Front flange and back flange	MEC P / D 1
CM 4	4030108048	Guarnizione flangia Flange gasket	MEC M / P / D / H / G 2
CM 5/D-H	4010220150	Rotore Rotor	MEC 9000/D-H 1
CME 5/D-H	4010220151	Rotore Rotor	MEC 11000/D-H 1
CMEC 5/D-H	4010220152	Rotore Rotor	MEC 13500/D-H 1
CM 5/DB-HB	4010220162	Rotore Rotor	MEC 9000/D-H BALLAST 1
CME 5/DB-HB	4010220163	Rotore Rotor	MEC 11000/D-H BAL- LAST 1
CMEC 5/DB- HB	4010220164	Rotore Rotor	MEC 13500/D-H BAL- LAST 1
CM 5/M	4010220144	Rotore Rotor	MEC 9000/M 1
CME 5/M	4010220145	Rotore Rotor	MEC 11000/M 1
CMEC 5/M	4010220146	Rotore Rotor	MEC 13500/M 1
CM 5/MB	4010220159	Rotore Rotor	MEC 9000/M BALLAST 1
CME 5/MB	4010220160	Rotore Rotor	MEC 11000/M BALLAST 1
CMEC 5/MB	4010220161	Rotore Rotor	MEC 13500/M BALLAST 1
CM 5/MSC	4010220153	Rotore Rotor	MEC 9000/M SENZA COLLET- TORE 1
CME S/MSC	4010220154	Rotore Rotor	MEC 11000/M SENZA COLLET- TORE 1
CMEC 5/MSC	4010220155	Rotore Rotor	MEC 13500/M SENZA COLLET- TORE 1
CM 5/P	4010220147	Rotore Rotor	MEC 9000/P 1



CME 5/P	4010220148	Rotore Rotor	MEC 11000/P	1
CMEC 5/P	4010220149	Rotore Rotor	MEC 13500/P	1
CM 5/PB	4010220156	Rotore Rotor	MEC 9000/P BALLAST	1
CME 5/PB	4010220157	Rotore Rotor	MEC 11000/P BALLAST	1
CMEC 5/PB	4010220158	Rotore Rotor	MEC 13500/P BALLAST	1
CM 6	5050707002	Chiavetta Key	MEC M/G 6X6X25	1
CM 7	4070113192	Paletta long life Long life blade	MEC 9000 300X60X6,5	5
CME 7	4070113193	Paletta long life Long life blade	MEC 11000 370X60X6,5	5
CMEC 7	4070113194	Paletta long life Long life blade	MEC 13500 460X60X6,5	5
CM 7	4070113192	Paletta long life Long life blade	MEC 9000 BALLAST 300X60X6,5	8
CME 7	4070113193	Paletta long life Long life blade	MEC 11000 BALLAST 370X60X6,5	8
CMEC 7	4070113194	Paletta long life Long life blade	MEC 13500 BALLAST 460X60X6,5	8
CM 7/SC	4070113198	Paletta Standard Blade	MEC 9000 299X60X9,7	5
CME 7/SC	4070113199	Paletta Standard Blade	MEC 11000 369X60X9,7	5
CMEC 7/SC	4070113200	Paletta Standard Blade	MEC 13500 459X60X9,7	5
CM 8	5012207001	Anello di compensazione Undulated ring	LMKAS 80F - Ø 80	2
CM 9	5050507017	Anello seeger Seeger ring	Ø 40 E - DIN 471	1
CM 12	5012107010	Cuscinetto a sfere Ball bearing	6307	1
CM 13	5030210028	Anello tenuta Seal ring	OR 86824	1
CM 14	5050107005	Vite Screw	M 6X16 TEF	3
CM 15	5060605006	Tappo nero Black Plug	Ø2" GAS	1
CM 18	5030300041	Paraolio Oil seal	48X62X10 DCV	2
CME 18	5030300042	Paraolio Vers. Ballast Oil seal Vers. Ballast	48X62X10 DCV VITON	2
CM 21	5060605001	Tappo carico olio Oil Plug	Ø 3/8" GAS	1



CM 23	5050107018	Vite Screw	M 10X16 TE	1
CM 24	5050202002	Rondella alluminio Aluminium washer	Ø 10X16X1,5	1
CM 25	5012107006	Cuscinetto a sfere Ball bearing	6304	1
CM 26/M	4020507003	Ingranaggio con albero 540 rpm Gear with shaft 540 rpm	MEC / M Z53-M2,5	1
CM 26/MA	4020507012	Ingranaggio con albero 1000 rpm Gear with shaft 1000 rpm	MEC / MA Z43-M2,5	1
CM 27	5030300005	Paraolio Oil seal	35X62X10	1
CM 28	4030108049	Guarnizione coperchio moltiplicatore Gearbox cover gasket	MEC / M	1
CM 29	5060605005	Tappo nero Black plug	Ø 1"1/2 GAS	1
CM 30	5060105004	Tappo livello olio Oil level plug	Ø 3/8" GAS	1
CM 32	5050300002	Dado autobloccante Self-locking nut	M 27X2X16	1
CM 33/M	4020607003	Pignone 540 rpm Pinion 540 rpm	MEC / M Z23-M2,5	1
CM 33/MA	4020607057	Pignone 1000 rpm Pinion 1000 rpm	MEC / MA Z33-M2,5	1
CM 34	5050207022	Rondella Washer	8X23X4 - DIN 6340	1
CM 39	4030109035	Guarnizione Collettore Manifold gasket	MEC 9000-11000-1350	1
CM 40	5030300015	Paraolio Oil seal	35X50X7	1
CM 41	5060410007	Sfera in gomma pesante Heavy rubber ball	Ø 90	1
CM 45	4012007011	Molla Spring		1
CM 48	5012107004	Cuscinetto a sfere Ball bearing	6208	2
CM 49	5050812001	Ingrassatore Lubricator	M 10X1	1
CM 52	5050707007	Chiavetta Key	MEC/P 8X7X50	1
CM 53	5030300002	Paraolio Oil seal		1
CM 57	4011707067	Distanziale rotore Rotor Spacer	MEC / M	1
CM 58	5050207031	Rondella per cono invertitore Smooth washer		1



CM 59	5101800000	Adesivo thermo label Sticker thermo label		1
CM 60	4010801024	Maniglia Handle		1
CM 61	4011501031	Curva aspirazione Suction elbow	Ø 76	1
CME 61	4011501032	Curva aspirazione Suction elbow	Ø 80	1
CMEC 61	4011501033	Curva aspirazione Suction elbow	Ø 100	1
CM 62	4010701018	Cono invertitore Reversing gear		1
CM 63	4010406017	Flangia premicurva Support flange	Ø 76 / 80	1
CME 63	4010406015	Flangia premicurva Support flange	Ø 100	1
CM 64	5030210008	Anello tenuta Seal ring	OR 189	2
CM 65	4010601056	Coperchio collettore Manifold cover		1
CM 66	5050107054	Vite Screw	M 10X35 TEF - FL/ ZIGR 8.8 -	2
CM 67	4010501026	Collettore Manifold		1
CM 68	4030109025	Guarnizione coperchio collettore Manifold cover gasket		1
CM 73/2"	4010606020	Coperchio serbatoio olio Tank Oil cover	Ø 2" GAS	1
CM 73/2"1/2	4010606021	Coperchio serbatoio olio Tank Oil cover	Ø 2" 1/2 GAS	1
CM 75	5050107050	Vite Screw	M10X110 TCEI	1
CM 76	5030300032	Paraolio Oil seal	45X60X10	1
CM 80	5030300013	Paraolio Oil seal	55X68X8	1
CM 81	4011001059	Supporto motore idraulico g.4 Hydraulic motor support g.4	MEC / H	1
CM 82	4020107024	Manicotto di trasmissione motore idraulico g.4 Hydraulic motor transmission coupling g. 4	MEC / H	1
CM 83	4010901018	Curva di scarico orientabile Revolving elbow	Ø 76	1
CME 83	4010901019	Curva di scarico orientabile Revolving elbow	Ø 80	1
CMEC 83	4010901020	Curva di scarico orientabile Revolving elbow	Ø 100	1



CM 86	5050707015	Chiavetta Key	8X7X40	1
CM 87	5020107002	Presa calettata foro ø32 Splined hub hole Ø 32	DIN9611 - Ø 1"3/8	1
CM 88	4010401063	Flangia anteriore / h Front flange / h	MEC / H	1
CM 93	5051206001	Golfare Eyebolt	M10	1
CM 94	4010601154	Coperchio scatola moltiplicatore Gearbox cover gasket	MEC / M	1
CM 95	4060505000	Protezione albero ce Shaft guard ce	MEC / M MOD. 21902 CE	1
CM 96	5050906006	Tappo in ferro Iron plug	M 16X1.5 DIN 908 -	1
CM 97	5050202007	Rondella alluminio Aluminium washer	Ø 16X20X1,5	1
CM 98	5050107028	Vite Screw	M12X35 TE	4
CM 99	5050207005	Rondella piana Smooth washer	Ø12	4
CM 100	4010401062	Flangia di supporto decompressore Decompressor support flange	MEC / G	1
CM 101	5050207003	Rondella Washer	Ø 8 MEC / H	3
CM 102	4020607005	Pignone garda 540 rpm GARDA pinion 540 rpm	MEC / G	1
CM 102/GA	4020607017	Pignone garda 1000 rpm GARDA pinion 1000 rpm	MEC / GA	1
CM 103	5050107026	Vite Screw	M10X25 TCEI	6
CM 106	5060100001	Asta livello olio Oil level rod	Ø 18X55 MM	1
CM 108	5050107107	Vite Screw	M 6X10 TEF FL/ZIGR 8.8 -	4
CM 109	5050507011	Anello seeger Seeger ring	Ø 80 I	1
CM 110	4010007038	Tubo di collegamento pompa-raccordo Hose	BALLAST SYSTEM	2
CM 111	5040407005	Raccordo curvo Curved connector	Ø 1/2" GAS	2
CM 112	4010007021	Tubo per filtri Hose for filter	BALLAST SYSTEM	2
CM 113	6100200029	Valvola unidirezionale completa Completed unidirectional valve	Ø 1/2" GAS	2
CM 114	4010007037	Sostegno tubi di aspirazione ballast Hose Support	BALLAST SYSTEM	1



CM 115	5050107123	Vite Screw	M 8X25 TE 10.9	3
CM 116	5050107109	Vite Screw	M 10X25 TEF FL/ZIGR 8.8	16
CM 117	5050107108	Vite Screw	M 8X25 TEF FL/ZIGR 8.8	15
CM 118	5030210063	Anello di tenuta Seal ring	OR 3700	1
CM 119	4010601153	Coperchio anteriore / p Front cover / p	MEC / P	1
CM 120	4010601101	Coperchio anteriore / d Front cover / d	MEC / D	1
	6010201045	Kit revisione pompa MEC 9000 long life Rebuilt Kit pump MEC 9000 long life		
	6010201046	Kit revisione pompa MEC 11000 long life Rebuilt Kit pump MEC 11000 long life		
	6010201047	Kit revisione pompa MEC 13500 long life Rebuilt Kit pump MEC 13500 long life		
	6010201048	Kit revisione pompa MEC 9000 BALLAST Rebuilt Kit pump MEC 9000 BALLAST		
	6010201049	Kit revisione pompa MEC 11000 BALLAST Rebuilt Kit pump MEC 11000 BALLAST		
	6010201050	Kit revisione pompa MEC 13500 BALLAST Rebuilt Kit pump MEC 13500 BALLAST		
	6010201051	Kit revisione pompa MEC 9000 S.C. Rebuilt Kit pump MEC 9000 S.C.		
	6010201052	Kit revisione pompa MEC 11000 S.C. Rebuilt Kit pump MEC 11000 S.C.		
	6010201053	Kit revisione pompa MEC 13500 S.C. Rebuilt Kit pump MEC 13500 S.C.		